

# **PARTS CATALOGUE**

## **GENERATOR**

### **EF2800i (7VU2)**

Serial No	EF2800i . 7VU-200101 and following
-----------	------------------------------------

**OWNERS LIT-19626-00-92**

**PARTS CATALOG TBA**

**SERVICE LIT-19616-00-92**

COLOR CODE	COLOR-RITE CODE	COLOR NAME	ABBREVI-ATION
ONJ	555SU/106SU	FARAWAY BLUE	FWB

# FOREWORD

## -INTRODUCTION- To The Yamaha Parts Fiche

This parts fiche lists parts and sub-assemblies for the EF2800i. When preparing a parts order, please refer to the most recently updated microfiche for this model.

### THE YAMAHA PARTS FICHE

#### SYMBOLS

[ ]	Inactive, no longer available
U.R.	Use size (thickness) and/or number as required
U.N.	Use as many as you need
T	Number of teeth in a gear
V	Voltage for light bulbs
S	"S" type oil seal or "S" type circlip
SD,SO,SW	"SD", "SO", or "SW" type oil seal
E,R	"E" or "R" type circlip
F/No.	Frame No. (Applicable Machine No.)
L.M.	Locally made
O.L.	Obtain locally
AP	Alternate Part

#### SUPERSEDED PART NUMBERS

If part 'A' has been superseded by part 'B', the superseding part number "B" will appear in the part number listing with the superseded part number "A" appearing in parentheses immediately following the description.

#### EXAMPLE:

Ref. No.	Part No.	Description	Qty.
	(Part 'B')	(Part 'A')	
8	796-15711-05-86	CASE, STARTER (796-15711-03-86).....1	

A part that has been supersede to a kit may be identified by a 99999-00000-00 part number appearing in the part number column. The old superseded part number will appear in parentheses immediately following the description. Listed directly below the 99999 part number will be those parts making up the kit. The description of the parts making up the kit will be preceded by a small black dot (.) and the description will be indented one letter space.

#### EXAMPLE:

Ref. No.	Part No.	Description	Qty.
8	99999-12345-00	CYLINDER (111-12345-00-00).....1	
	234-56789-00-00	• HEAD, CYLINDER.....1	
	345-67890-00-00	• GASKET, CYLINDER.....1	

#### SIZES

Except for steel balls (ball sizes are indicated in inches), all parts sizes are indicated in millimeters as in the following examples:

Hose (Rubber or Vinyl) .....	Inside Diameter - Length
O-Ring .....	Section Area - Inside Diameter
Washer, Shim, Collar.....	Inside Diameter - Outside Diameter Thickness (Length)

#### ASSEMBLIES AND COMPONENT PARTS

Assemblies and their component parts, are identified by an indentation of one letter space, and the description is preceded by a dot (.). If two main assemblies are listed, and have the same basic description (i.e.: left and right sides of the same assembly), one will immediately follow the other. If each of these main assemblies is made up of almost the same components, these component parts will be listed immediately under the second main assembly line and will be indicated, as noted above.

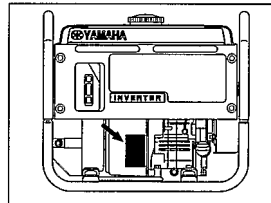
If the component is the same for both main assemblies, the quantity indicated will be the total required. If the component is not the same for both main assemblies, the quantity for each separate item will be listed separately.

#### EXAMPLE:

Description	Qty
CARBURETOR ASSY, LEFT .....	1
CARBURETOR ASSY, RIGHT .....	1
. JET, PILOT .....	2
. NOZZLE, MAIN .....	2
. LEVER, STARTER, LEFT .....	1
. LEVER, STARTER, RIGHT .....	1

#### APPLICABLE SERIAL NO.

(1) Serial No.

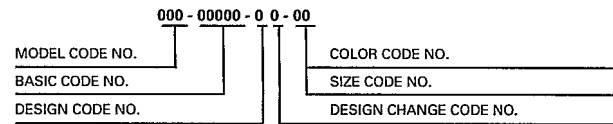


# FOREWORD

## THE YAMAHA PART NUMBER

The Yamaha part number consists of 12 digits. Each number represents a specific piece of information relating to a replacement part. The following is a guide for reading and interpreting the Yamaha part number.

### BASIC PART NUMBER CONFIGURATION:



### MODEL CODE NUMBER

FIRST THREE DIGITS . . . 000-00000-00-00

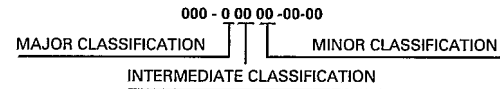
Every model in each Yamaha product line is assigned a model number to identify that particular model. All component parts are given the model code number relating to the model on which they were first used.

Example: 7J0-00000-00-00 identifies the EF2000.  
7J4-00000-00-00 identifies the EF2800.

### BASIC CODE NUMBER

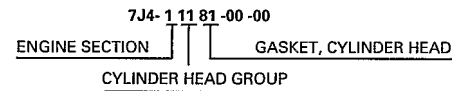
MIDDLE FIVE DIGITS . . . 000-00000-00-00

These "Middle Five Digits" indicate the type of part i.e., piston, rings, lower units, etc. The five digits are broken down as follows:



The "Major Classification" indicates the section to which the parts belong, i.e., engine, electrical etc. The "Intermediate" and "Minor Classifications" indicate more specific details.

Example:



### DESIGN CODE NUMBER: 000-00000-00-00

The design code distinguishes like component parts from one another when specification differences are involved. For example, distinguishing a standard size piston ring from an oversized piston ring.

Example:

7J4-11610-00-00 Standard Piston Ring Set for EF2800  
7J4-11610-20-00 Oversize Piston Ring Set for EF2800

### DESIGN CHANGE CODE NUMBER: 000-00000-00-00

This code number is used to identify a difference between a new component part and old one when a new part is created by changing the old one.

Example: EF2800

7J4-11610-00-00 PISTON RING SET, STD. - ORIGINAL  
7J4-11610-01-00 PISTON RING SET, STD. - FIRST DESIGN CHANGE

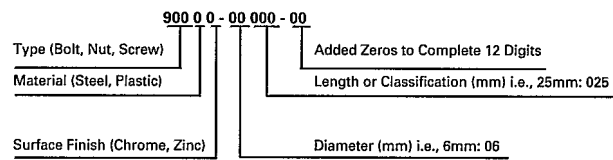
Only major changes to performance, durability, quality, appearance, cost or interchangeability will affect a part number change.

### COLOR CODE & SIZE CODE NUMBER: 000-00000-00-00

When applicable, the last two digits of the part number identify:

1. Color Code: The painted color or type of plating or surface treatment used on certain parts.
2. Size Code: The last two digits are also used to show the size of parts (mm). Such as the thickness of shims or the size of pistons.

### HARDWARE (Fastener) PART NUMBER CONFIGURATION:



### TYPE:

A fastener part number always begins with the number "9" followed by either a 0, 1, 2, 3, 4, 5, 6, 7 or 8 designating one of eight major divisions within this group.

# FOREWORD

## Example:

- 9 0 000-00000-00 "0" designates various types.
- 9 1 000-00000-00 "1" designates bolts, cotter pins, etc.
- 9 2 000-00000-00 "2" designates screw, nuts, etc.
- 9 3 000-00000-00 "3" designates oil seals, o-rings, bearings, etc.
- 9 4 000-00000-00 "4" designates spark plugs.
- 9 5 000-00000-00 "5" designates bolts and nuts.
- 9 7 000-00000-00 "7" designates ISO bolts.
- 9 8 000-00000-00 "8" designates ISO screws and nuts.

The only major divisions which the mechanic should become familiar with are those related to the general hardware (nuts, bolts, and washers), since these are the most commonly used and most often replaced items. By knowing how to interpret the part number, the dimensions of a piece of hardware can be determined. This can be very helpful during major engine repair, and general parts replacement.

## BOLT EXAMPLE:

91311 - 06 018 - 00  
6mm outside diameter      18mm in length

## EXCEPTION:

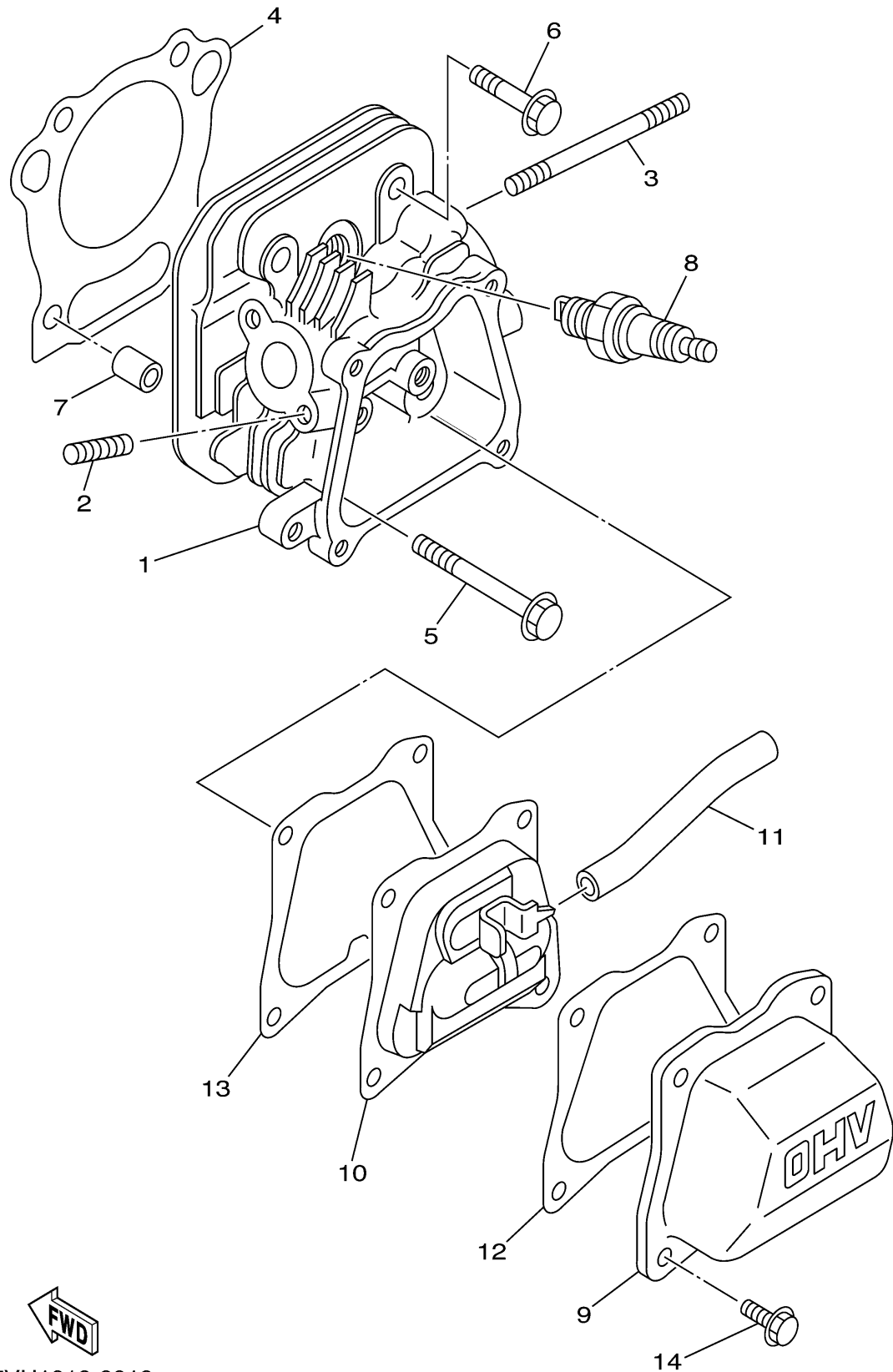
It is NOT possible to identify the LENGTH of bolts having a 901 prefix. Only the bolt diameter can be identified with this number.

## NUT AND WASHER EXAMPLE:

95301 - 08600 - 00 NUT  
8mm inside diameter

90201 - 25290 - 00 WASHER  
25mm inside diameter

# CYLINDER

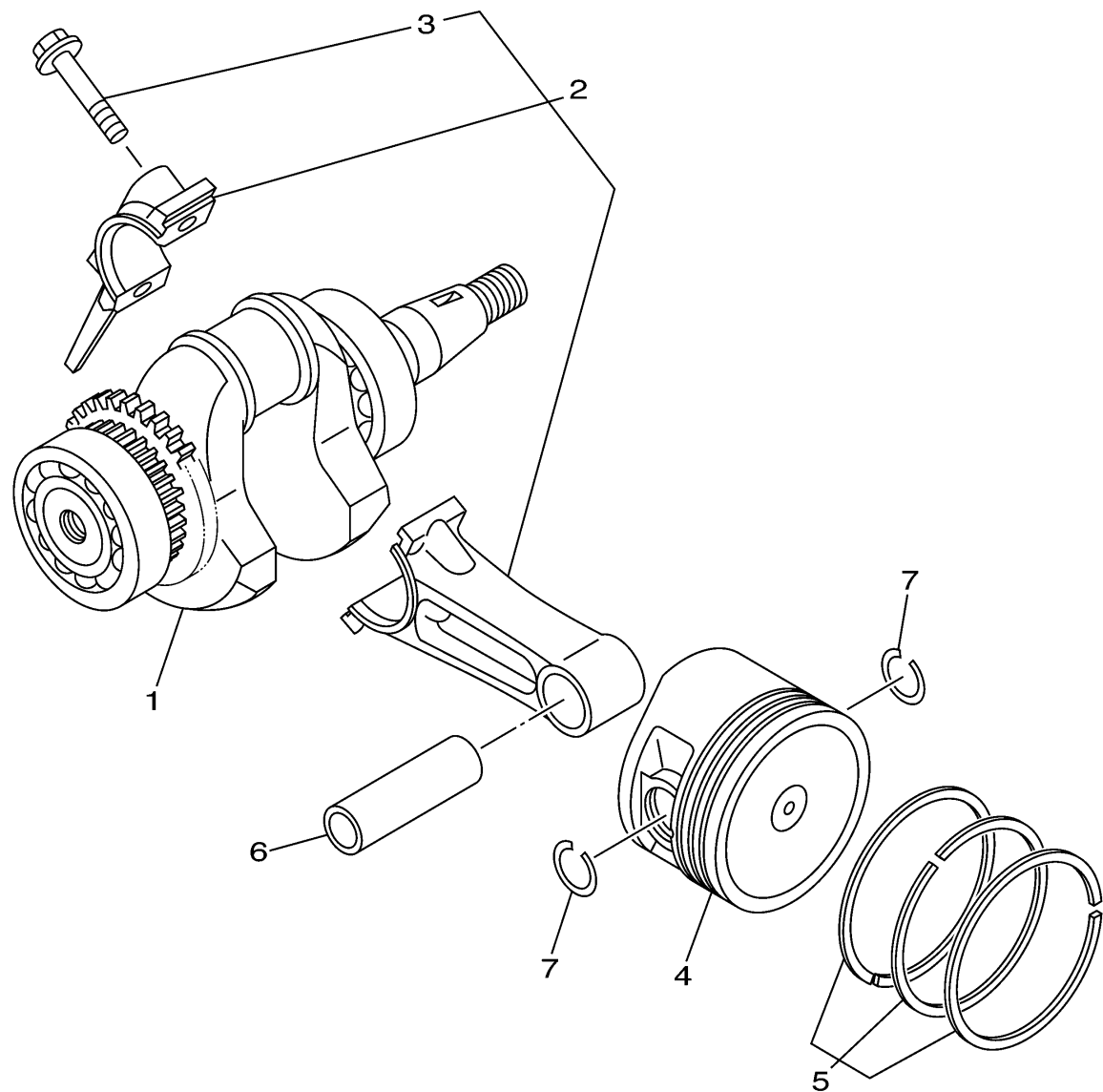


Ref. No.	Part Number	Description	Qty	Remarks
1	7NJ-11111-01-00	HEAD, CYLINDER 1	1	(7VU2)
2	95607-06615-00	BOLT, STUD	2	(7VU2)
3	90116-06493-00	BOLT, STUD	2	(7VU2)
4	7NN-11181-00-00	GASKET, CYLINDER HEAD 1	1	(7VU2)
5	95827-08065-00	BOLT, FLANGE	2	(7VU2)
6	95827-08045-00	BOLT, FLANGE	2	(7VU2)
7	99530-10114-00	PIN, DOWEL	2	(7VU2)
8	NGK-BPR4E-S0-00	PLUG, SPARK (NGK BPR4ES)	1	(7VU2)
9	7NJ-11191-00-00	COVER, CYLINDER HEAD 1	1	(7VU2)
10	7NJ-11160-00-00	BREATHER ASSY	1	(7VU2)
11	90445-131J5-00	HOSE (L106)	1	(7VU2)
12	7NJ-11169-00-00	GASKET, BREATHER COVER	1	(7VU2)
13	7NJ-11193-00-00	GASKET, HEAD COVER 1	1	(7VU2)
14	95827-06012-00	BOLT, FLANGE	4	(7VU2)



7VU1010-0010

# CRANKSHAFT. PISTON

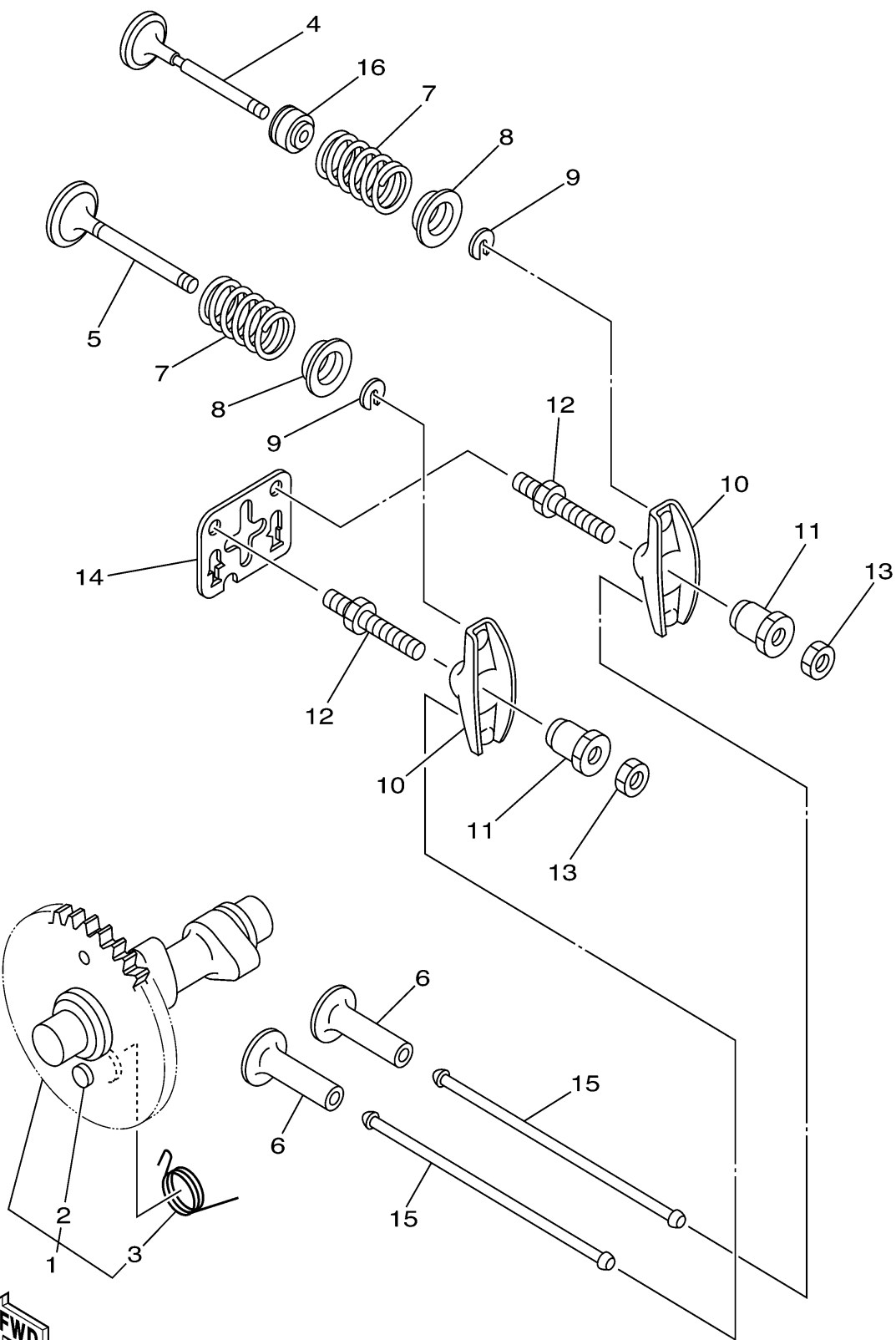


Ref. No.	Part Number	Description	Qty	Remarks
1	7VU-11400-00-00	CRANKSHAFT ASSY .....	1	(7VU2)
2	7NJ-11650-00-00	CONNECTING ROD ASSY ....	1	(7VU2)
3	JA9-11654-01-00	. BOLT, CONNECTING ROD ..	2	(7VU2)
4	7NJ-11631-00-98	PISTON (STD) .....	1	(7VU2)
	7NJ-11635-00-00	PISTON (0.25MM O/S) .....	1	AP(7VU2)
	7NJ-11636-00-00	PISTON (0.50MM O/S) .....	1	AP(7VU2)
5	7NJ-11603-01-00	PISTON RING SET (STD) .....	1	(7VU2)
	7NJ-11604-01-00	PISTON RING SET (0.25MM O/S) .....	1	AP(7VU2)
	7NJ-11605-01-00	PISTON RING SET (0.50MM O/S) .....	1	AP(7VU2)
6	4H7-11633-00-00	PIN, PISTON .....	1	(7VU2)
7	93450-17025-00	CIRCLIP .....	2	(7VU2)



7VU1010-0020

# CAMSHAFT.VALVE

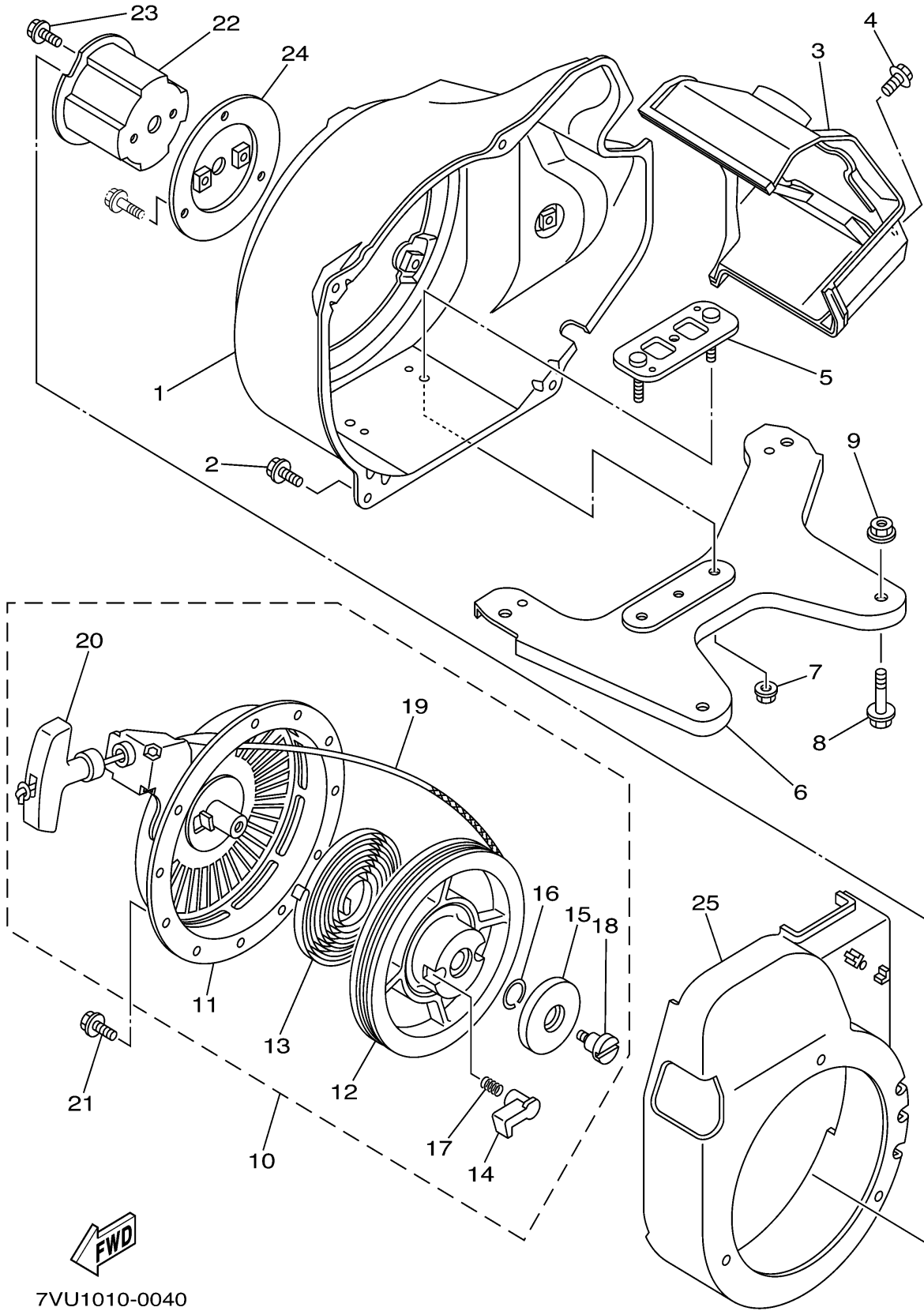


Ref. No.	Part Number	Description	Qty	Remarks
1	7NJ-12170-02-00	CAMSHAFT ASSY 1 .....	1	(7VU2)
2	7NJ-12299-01-00	. BOLT, STOPPER .....	1	(7VU2)
3	7NJ-12287-00-00	. SPRING, DECOMPRESSION .	1	(7VU2)
4	7NJ-12111-00-00	VALVE, INTAKE .....	1	(7VU2)
5	7NJ-12121-00-00	VALVE, EXHAUST .....	1	(7VU2)
6	JA9-12153-00-00	LIFTER, VALVE .....	2	(7VU2)
7	90501-205J4-00	SPRING, COMPRESSION .....	2	(7VU2)
8	7NJ-12117-00-00	RETAINER, VALVE SPRING ..	2	(7VU2)
9	7NJ-12118-00-00	COTTER, VALVE .....	2	(7VU2)
10	7NN-12151-00-00	ARM, VALVE ROCKER .....	2	(7VU2)
11	7NN-12165-01-00	PIVOT, ROCKER ARM .....	2	(7VU2)
12	7FK-12157-00-00	BOLT .....	2	(7VU2)
13	7FK-12158-00-00	NUT, LOCK .....	2	(7VU2)
14	7NJ-12155-00-00	GUIDE, PUSH ROD .....	1	(7VU2)
15	7NJ-12154-00-00	ROD, VALVE PUSH .....	2	(7VU2)
16	51Y-12119-00-00	SEAL, VALVE STEM .....	1	(7VU2)



7VU1010-0030

# AIR SHROUD. STARTER

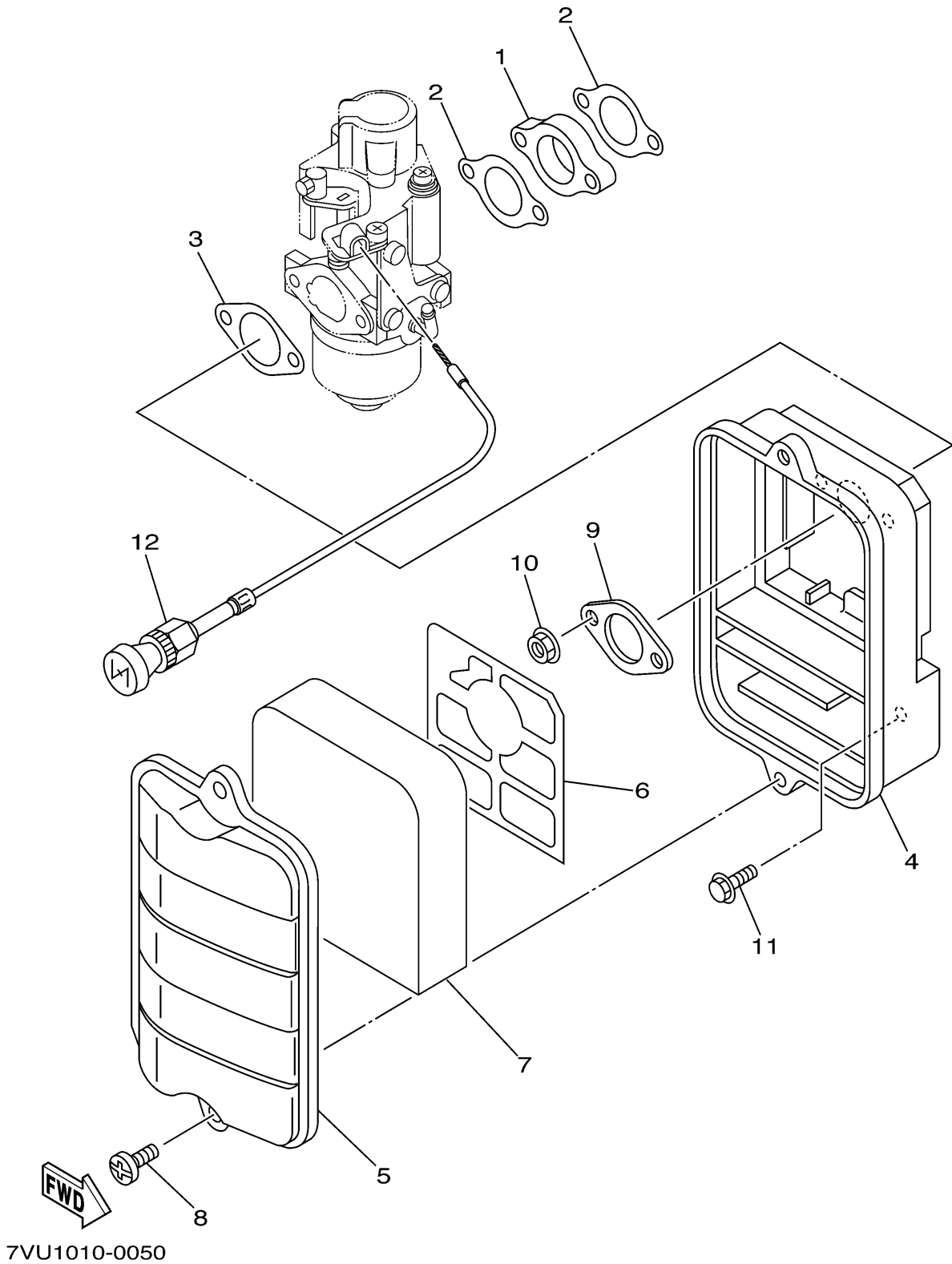


Ref. No.	Part Number	Description	Qty	Remarks
1	7VU-12621-00-00	CASE, FAN .....	1	(7VU2)
2	95807-06012-00	BOLT, FLANGE .....	4	(7VU2)
3	7NJ-12651-01-00	AIR SHROUD, CYLINDER 1 ...	1	(7VU2)
4	95807-06012-00	BOLT, FLANGE .....	1	(7VU2)
5	7VU-12633-00-00	PLATE .....	1	(7VU2)
6	7VU-11011-00-00	BRACKET, ENGINE 1 .....	1	(7VU2)
7	95707-06500-00	NUT, FLANGE .....	2	(7VU2)
8	95807-08030-00	BOLT, FLANGE .....	2	(7VU2)
9	95707-08500-00	NUT, FLANGE .....	2	(7VU2)
10	7VU-15710-00-00	STARTER ASSY .....	1	(7VU2)
11	7VU-15711-00-00	. CASE, STARTER .....	1	(7VU2)
12	7VU-15714-00-00	. DRUM, SHEAVE .....	1	(7VU2)
13	7TA-15713-00-00	. SPRING, STARTER .....	1	(7VU2)
14	JL8-15741-00-00	. PAWL, DRIVE .....	2	(7VU2)
15	7VU-15716-00-00	. PLATE, DRIVE .....	1	(7VU2)
16	7TA-15715-00-00	. SPRING, FRICTION .....	1	(7VU2)
17	JK4-15743-00-00	. SPRING, RETURN .....	2	(7VU2)
18	7NJ-15793-00-00	. SCREW .....	1	(7VU2)
19	7VU-15751-00-00	. WIRE, STARTER .....	1	(7VU2)
20	7TA-15755-00-00	. HANDLE, STARTER .....	1	(7VU2)
21	95807-06016-00	BOLT, FLANGE .....	3	(7VU2)
22	7VU-15723-00-00	PULLEY, STARTER .....	1	(7VU2)
23	95807-06008-00	BOLT, FLANGE .....	2	(7VU2)
24	7VU-15724-00-00	SPACER .....	1	(7VU2)
25	7VU-12616-00-00	COVER, FAN CASE .....	1	(7VU2)

7VU1010-0040



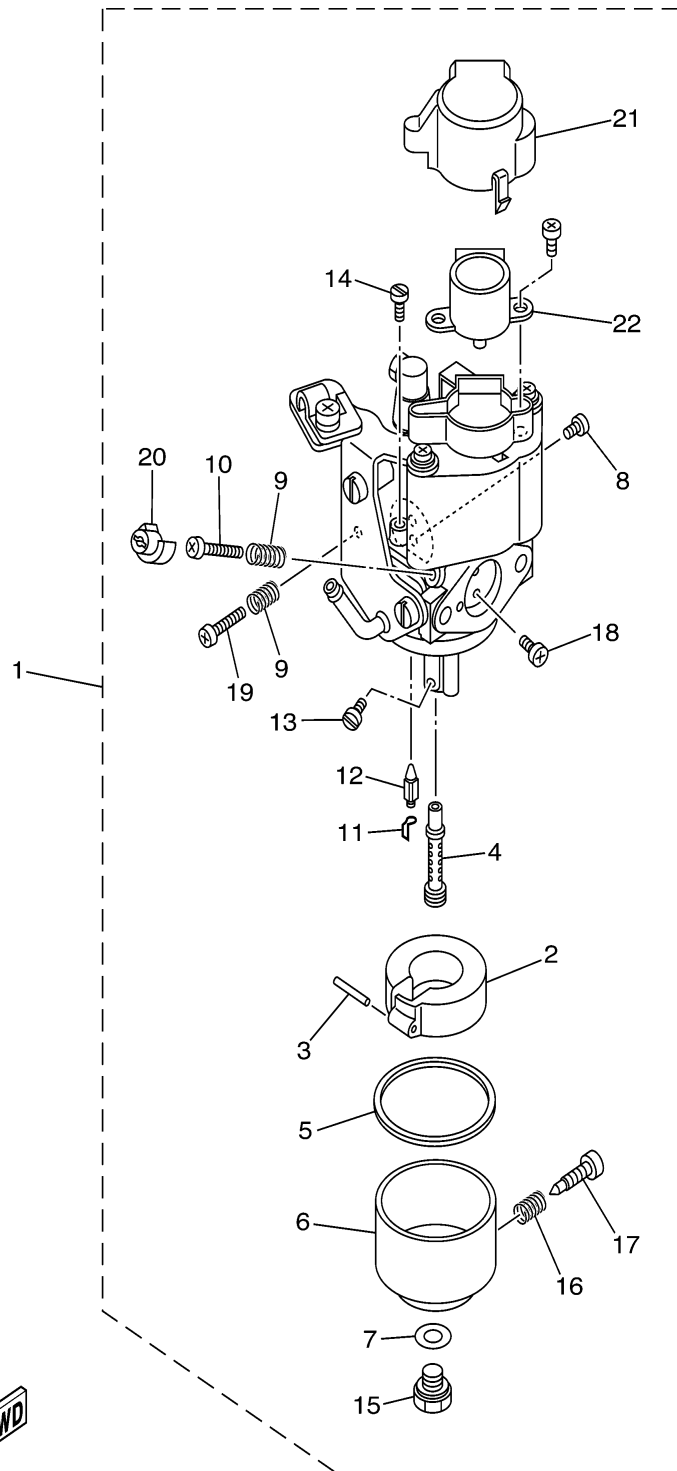
# INTAKE



Ref. No.	Part Number	Description	Qty	Remarks
1	7NJ-13596-00-00	JOINT, CARBURETOR 2	1	(7VU2)
2	7NJ-13557-00-00	GASKET	2	(7VU2)
3	7NJ-13567-00-00	GASKET	1	(7VU2)
4	7NJ-14411-00-00	CASE, AIR CLEANER 1	1	(7VU2)
5	7NJ-14412-00-00	CAP, CLEANER CASE 1	1	(7VU2)
6	7NJ-14468-00-00	PLATE, ELEMENT FITTING	1	(7VU2)
7	7NJ-14451-00-00	ELEMENT, AIR CLEANER	1	(7VU2)
8	90146-06014-00	SCREW, OVAL FILLISTER	2	(7VU2)
9	7NB-14477-00-00	PLATE	1	(7VU2)
10	95707-06500-00	NUT, FLANGE	2	(7VU2)
11	95807-06016-00	BOLT, FLANGE	1	(7VU2)
12	7VU-26331-00-00	CABLE, STARTER 1	1	(7VU2)

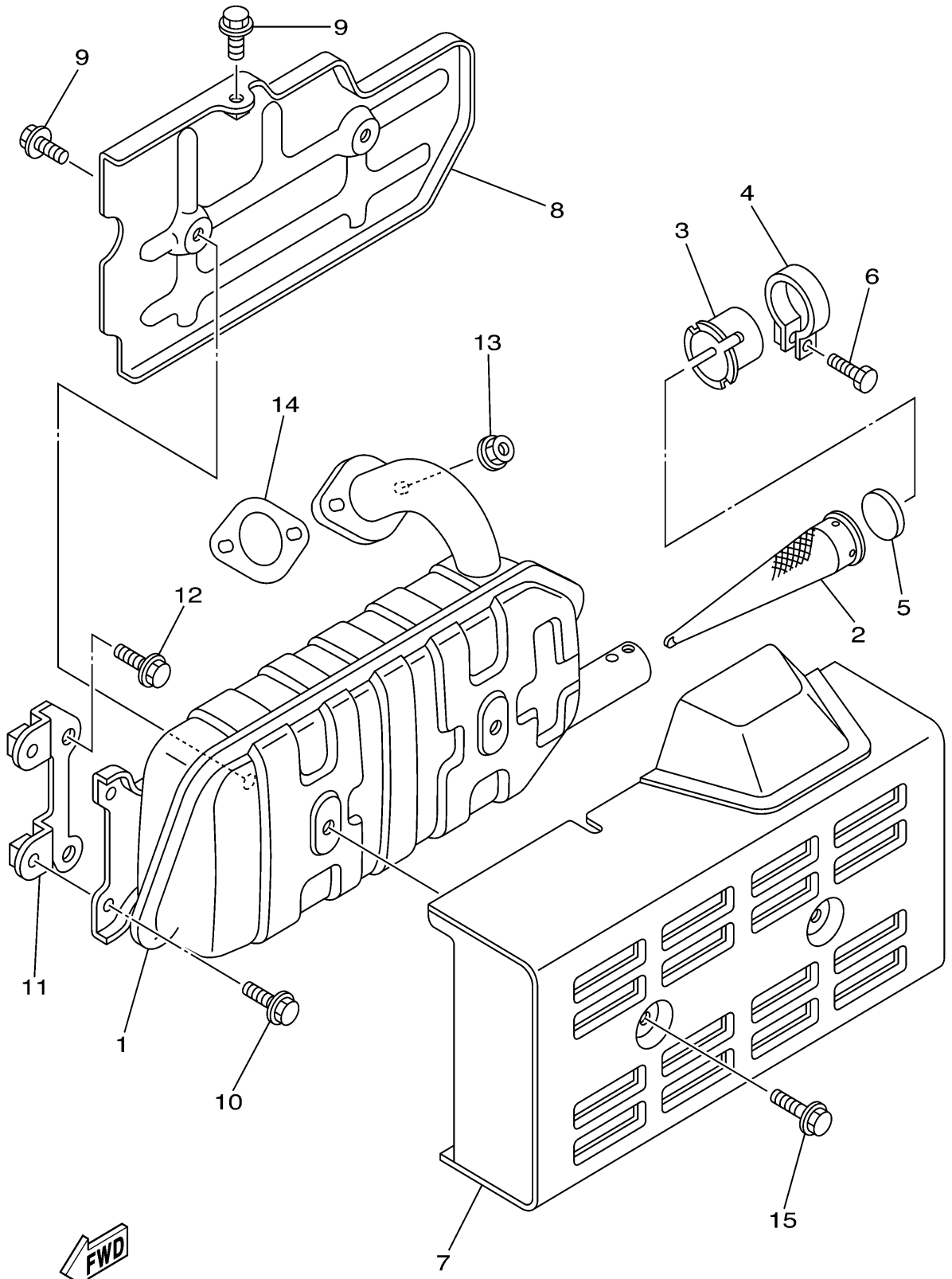
# CARBURETOR

Ref. No.	Part Number	Description	Qty	Remarks
1	7VU-14101-10-00	CARBURETOR ASSY 1	1	(7VU2)
2	7LG-14185-00-00	. FLOAT	1	(7VU2)
3	22F-14186-00-00	. PIN, FLOAT	1	(7VU2)
4	7NN-1495F-1B-00	. NOZZLE, MAIN	1	(7VU2)
5	7G0-14184-00-00	. GASKET, FLOAT CHAMBER	1	(7VU2)
6	7EG-14181-00-00	. BODY, FLOAT CHAMBER 1	1	(7VU2)
7	7G0-14227-00-00	. WASHER	1	(7VU2)
8	7RH-14486-00-00	. SCREW, ROD	2	(7VU2)
9	73A-14212-00-00	. SPRING	2	(7VU2)
10	7NJ-14211-00-00	. SCREW, PILOT ADJUSTING	1	(7VU2)
11	7EG-14159-00-00	. CLIP	1	(7VU2)
12	7LG-14150-11-00	. NEEDLE ASSY	1	(7VU2)
13	1HX-1423E-35-A0	. JET, MAIN (88.8)	1	(7VU2)
14	620-14142-37-A0	. JET, PILOT ( 37.5)	1	(7VU2)
15	7NJ-14162-00-00	. BOLT, HOLDING	1	(7VU2)
16	73A-14212-00-00	. SPRING	1	(7VU2)
17	7E1-14191-00-00	. PLUG, DRAIN	1	(7VU2)
18	7RH-14216-00-00	. SCREW	2	(7VU2)
19	1WG-14922-00-00	. SCREW, THROTTLE	1	(7VU2)
20	7LV-14118-00-00	. CAP (CUT AWAY 1/8)	1	(7VU2)
21	7VU-14293-00-00	. COVER 1	1	(7VU2)
22	7VU-86240-00-00	. THROTTLE MOTOR ASSY	1	(7VU2)



7VU2110-0060

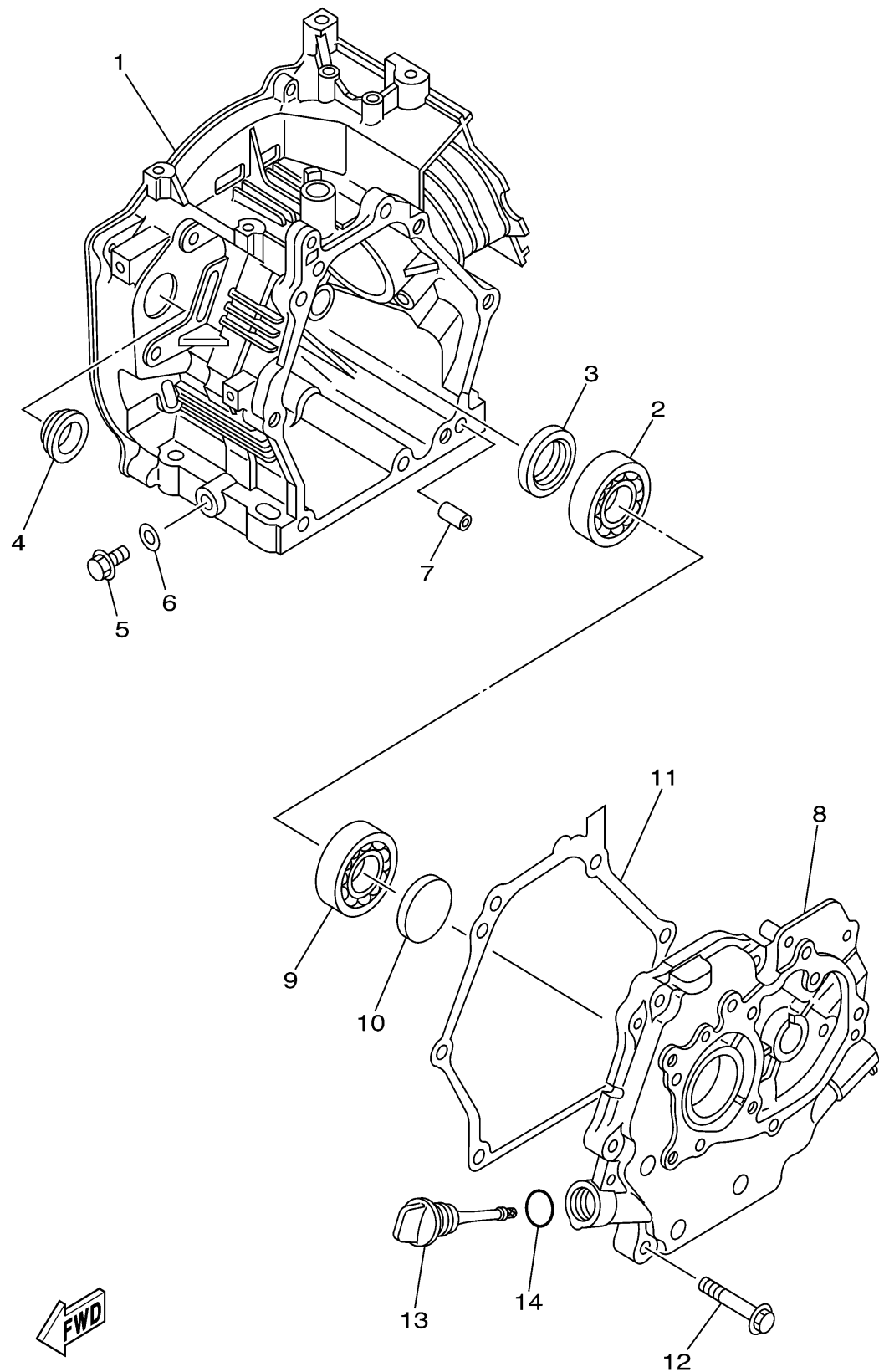
# EXHAUST



Ref. No.	Part Number	Description	Qty	Remarks
1	7VU-14721-00-00	MUFFLER 2 .....	1	(7VU2)
2	7LL-14786-00-00	ARRESTER, SPARK .....	1	(7VU2)
3	7NJ-14799-01-00	CAP .....	1	(7VU2)
4	7NJ-14788-00-00	BAND, SILENCER .....	1	(7VU2)
5	7NJ-1479E-00-00	NET, WIRE 2 .....	1	(7VU2)
6	90153-05024-00	SCREW, HEXAGON .....	1	(7VU2)
7	7VU-14718-00-00	PROTECTOR, MUFFLER 1 ....	1	(7VU2)
8	7VU-14728-00-00	PROTECTOR, MUFFLER 2 ....	1	(7VU2)
9	95827-06008-00	BOLT, FLANGE .....	3	(7VU2)
10	95827-06008-00	BOLT, FLANGE .....	2	(7VU2)
11	7VU-14781-00-00	STAY, MUFFLER 2 .....	1	(7VU2)
12	95827-08012-00	BOLT, FLANGE .....	2	(7VU2)
13	95307-06600-00	NUT .....	2	(7VU2)
14	JA9-14613-00-00	GASKET, EXHAUST PIPE ....	1	(7VU2)
15	95827-06008-00	BOLT, FLANGE .....	2	(7VU2)

7VU2110-0070

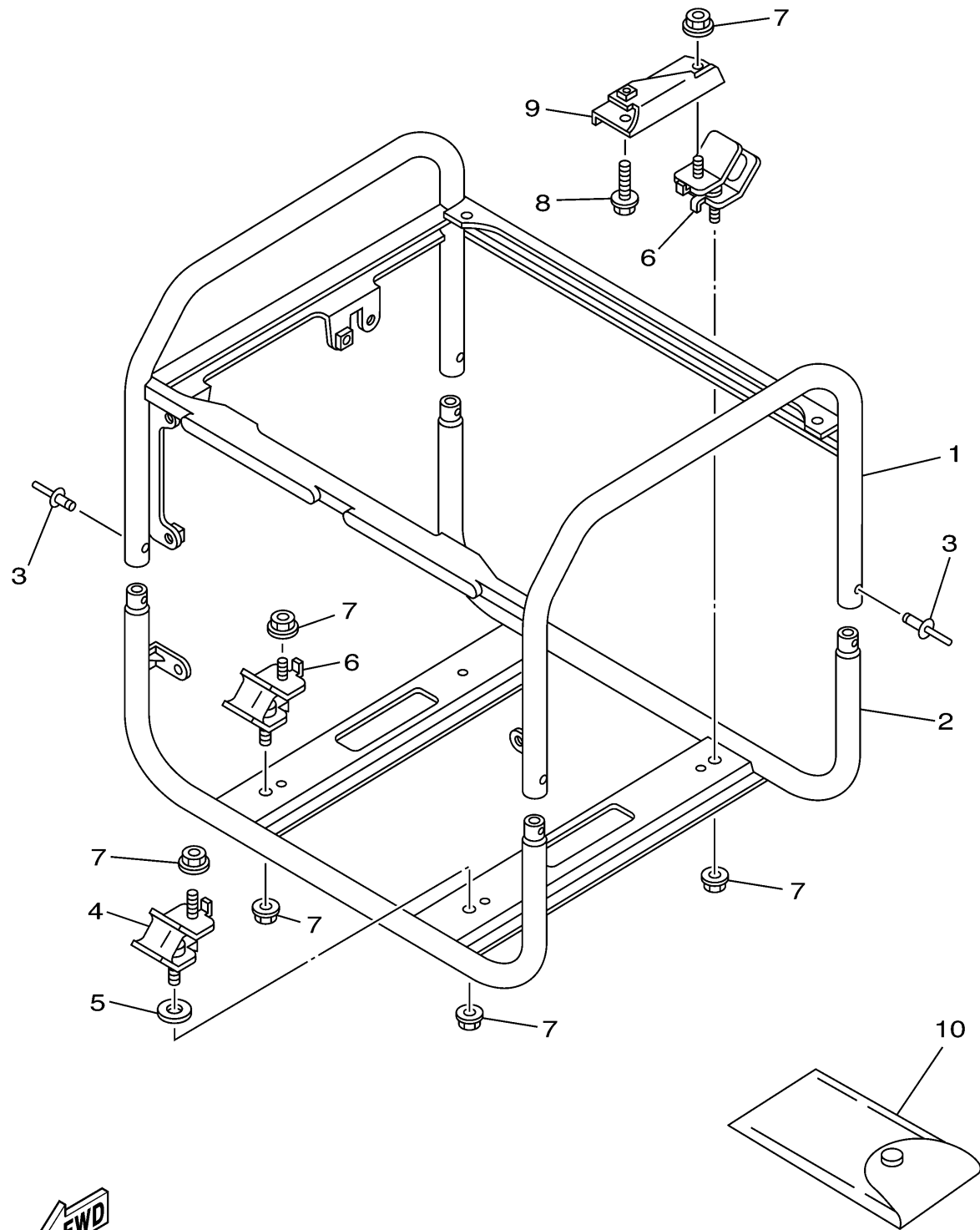
# CRANKCASE



Ref. No.	Part Number	Description	Qty	Remarks
1	7VU-15111-00-00	CRANKCASE 1 .....	1	(7VU2)
2	93306-20511-00	BEARING .....	1	(7VU2)
3	93102-25090-00	OIL SEAL .....	1	(7VU2)
4	90480-26602-00	GROMMET .....	1	(7VU2)
5	95027-10016-00	BOLT, FLANGE .....	1	(7VU2)
6	90430-10188-00	GASKET .....	1	(7VU2)
7	99530-08016-00	PIN, DOWEL .....	2	(7VU2)
8	7VU-15411-00-00	COVER, CRANKCASE 1 .....	1	(7VU2)
9	93306-20511-00	BEARING .....	1	(7VU2)
10	90338-41106-00	PLUG .....	1	(7VU2)
11	7NJ-15451-00-00	GASKET, CRANKCASE COVER 1 .....	1	(7VU2)
12	95827-08035-00	BOLT, FLANGE .....	6	(7VU2)
13	18G-15362-00-00	PLUG, OIL LEVEL .....	1	(7VU2)
14	93210-207A0-00	O-RING .....	1	(7VU2)

7VU1010-0080

# FRAME

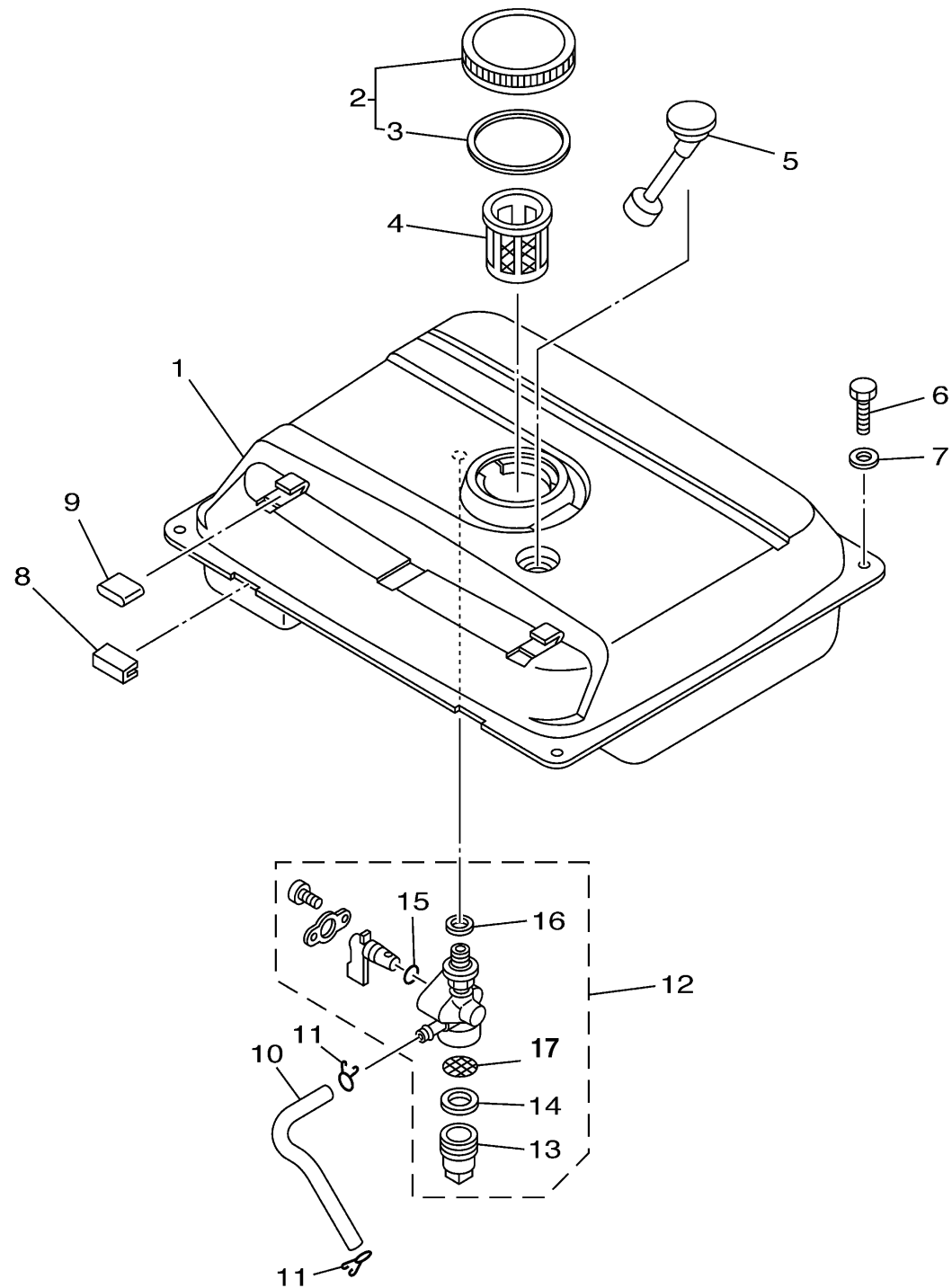


Ref. No.	Part Number	Description	Qty	Remarks
1	7VU-22840-00-00	FRAME COMP. ....	1	(7VU2)
2	7VU-22850-00-00	FRAME COMP. 2 ....	1	(7VU2)
3	90267-48N00-00	RIVET, BLIND ....	4	(7VU2)
4	7VU-22891-00-00	INSULATOR, MOUNTING ....	1	(7VU2)
5	90201-086A3-00	WASHER, PLATE ....	1	(7VU2)
6	7VU-22894-00-00	INSULATOR, MOUNTING 2 ...	3	(7VU2)
7	95707-08500-00	NUT, FLANGE ....	8	(7VU2)
8	95807-08030-00	BOLT, FLANGE ....	1	(7VU2)
9	7VU-11012-00-00	BRACKET, ENGINE 2 ....	1	(7VU2)
10	7H6-28100-00-00	TOOL KIT ....	1	(7VU2)



7VU1010-0090

# FUEL TANK



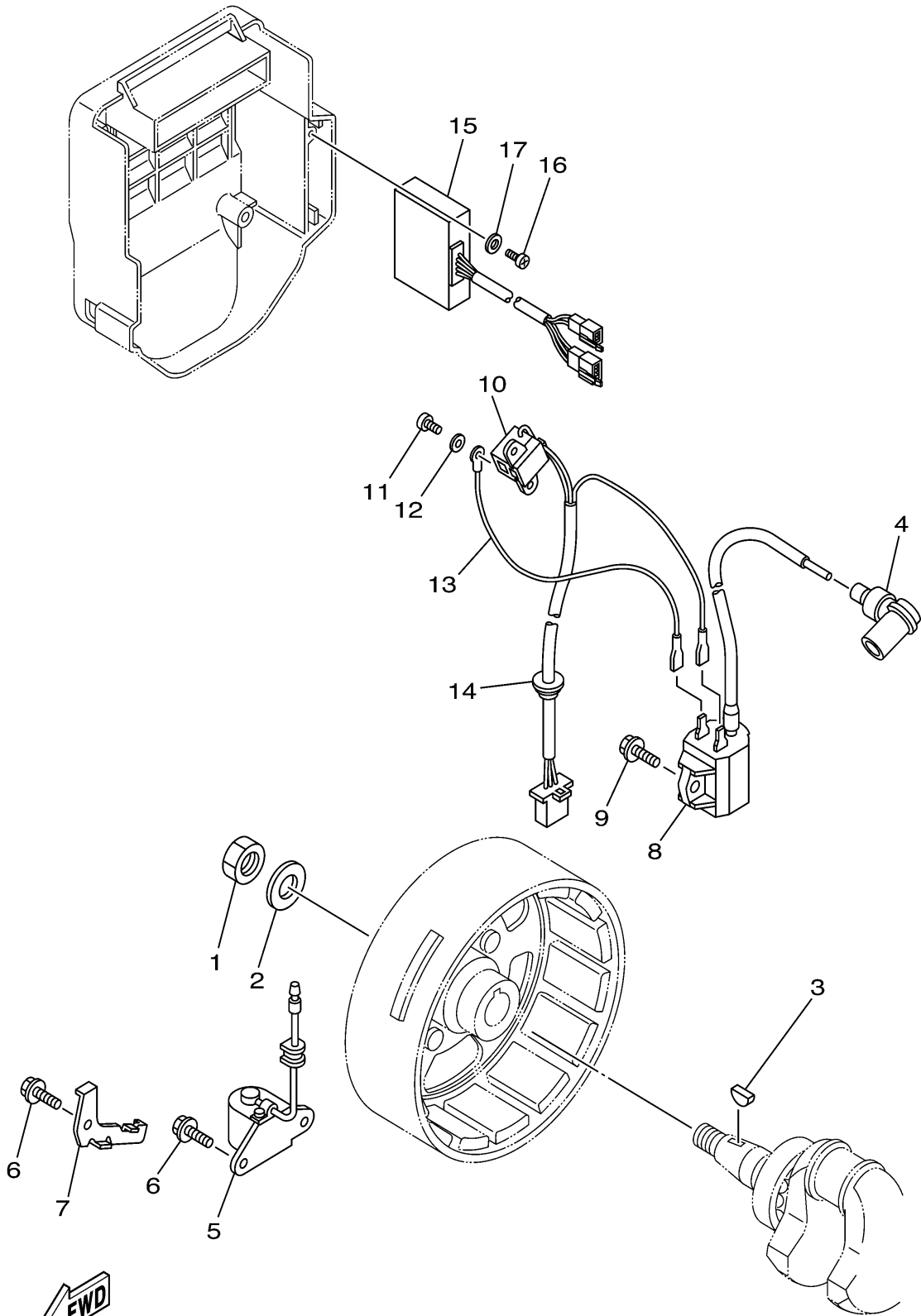
Ref. No.	Part Number	Description	Qty	Remarks
1	7VU-24110-00-P0	FUEL TANK COMP. ....	1	(7VU2)
2	74T-24610-00-00	CAP ASSY .....	1	(7VU2)
3	796-24612-00-00	. GASKET, CAP .....	1	(7VU2)
4	630-24167-00-00	STRAINER .....	1	(7VU2)
5	7A9-85710-02-00	FUEL LEVEL GAUGE ASSY ..	1	(7VU2)
6	97007-06012-00	BOLT .....	2	(7VU2)
7	90201-06380-00	WASHER, PLATE .....	2	(7VU2)
8	7LG-24181-00-00	DAMPER, LOCATING 1 .....	2	(7VU2)
9	2E9-24182-00-00	DAMPER, LOCATING 2 .....	2	(7VU2)
10	7VU-24311-00-00	PIPE, FUEL 1 .....	1	(7VU2)
11	90467-09006-00	CLIP .....	2	(7VU2)
12	7RA-24500-00-00	FUEL COCK ASSY 1 .....	1	(7VU2)
13	7J3-24521-00-00	. CUP, FILTER .....	1	(7VU2)
14	4X8-24565-00-00	. GASKET .....	1	(7VU2)
15	7NJ-24534-00-00	. SEAL, COCK .....	1	(7VU2)
16	7NJ-24532-00-00	. GASKET .....	1	(7VU2)
17	7NJ-24515-00-00	. NET, FILTER 2 .....	1	(7VU2)



7VU2110-0100

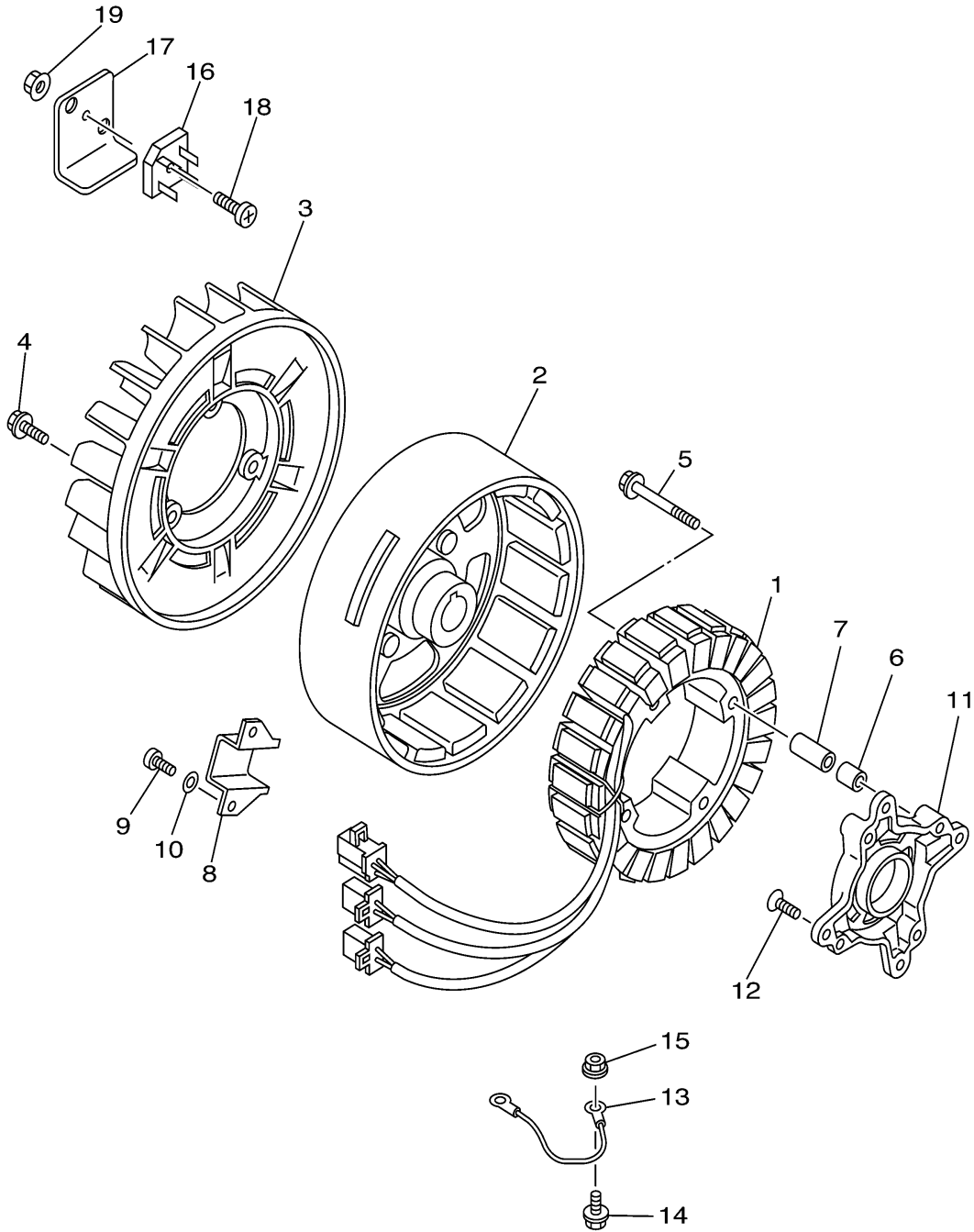
# MAGNETO

Ref. No.	Part Number	Description	Qty	Remarks
1	90170-14403-00	NUT .....	1	(7VU2)
2	92907-14200-00	WASHER .....	1	(7VU2)
3	90280-04052-00	KEY, WOODRUFF .....	1	(7VU2)
4	7VU-82370-00-00	PLUG CAP ASSY .....	1	(7VU2)
5	7NJ-85720-02-00	OIL LEVEL GAUGE ASSY ....	1	(7VU2)
6	95827-06012-00	BOLT, FLANGE .....	3	(7VU2)
7	7NJ-85724-00-00	CLAMP .....	1	(7VU2)
8	7VU-82310-00-00	IGNITION COIL ASSY .....	1	(7VU2)
9	95807-06020-00	BOLT, FLANGE .....	1	(7VU2)
10	7VU-85595-00-00	COIL, PULSER .....	1	(7VU2)
11	98507-05010-00	SCREW, PAN HEAD .....	2	(7VU2)
12	92907-05600-00	WASHER, PLATE .....	2	(7VU2)
13	7VU-82318-00-00	WIRE, SUB-LEAD .....	1	(7VU2)
14	90480-12013-00	GROMMET .....	1	(7VU2)
15	7VU-85540-00-00	C.D.I. UNIT ASSY .....	1	(7VU2)
16	97707-50612-00	SCREW, TAPPING .....	1	(7VU2)
17	90201-05032-00	WASHER, PLATE .....	1	(7VU2)



7VU1010-0110

# GENERATOR



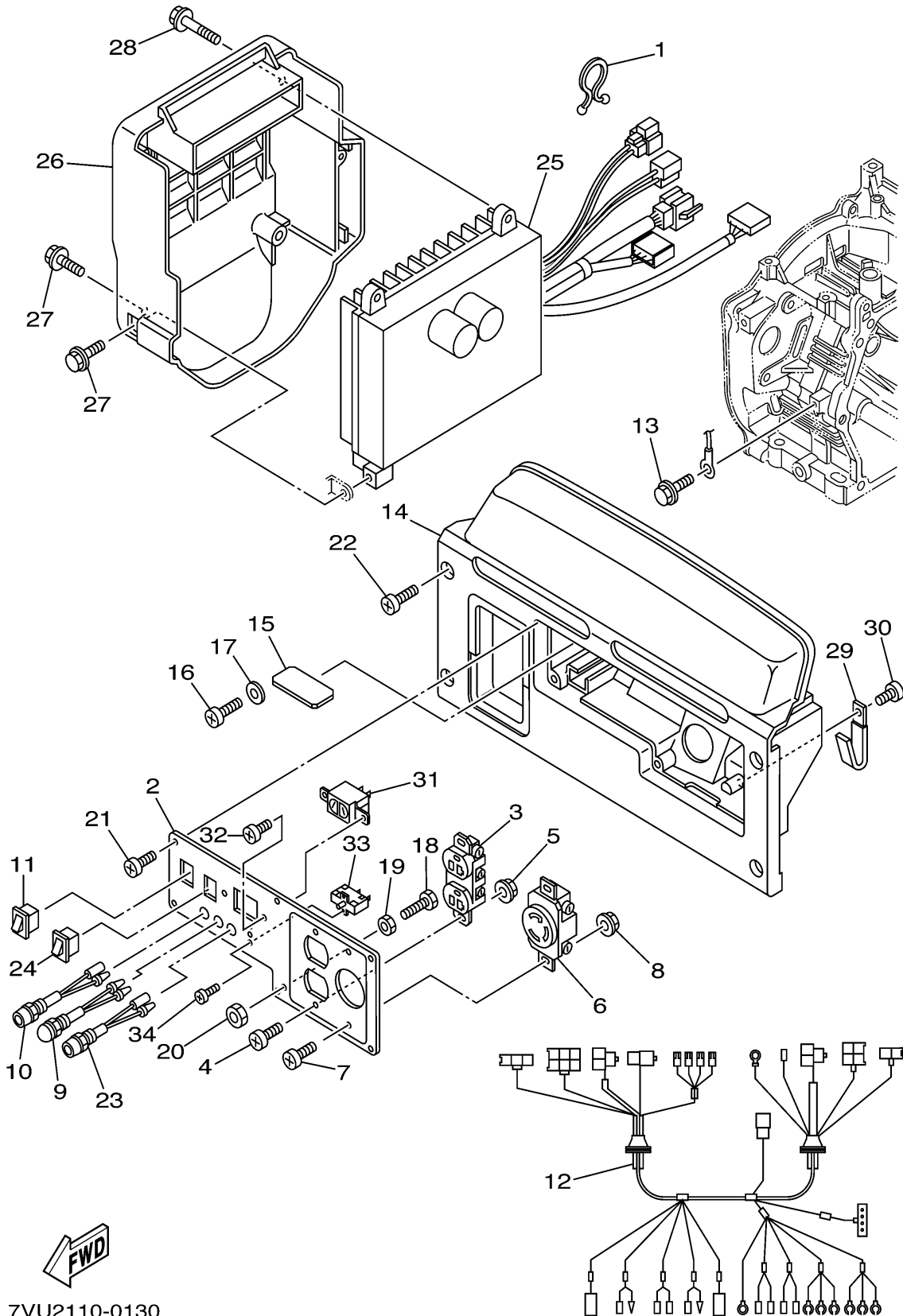
Ref. No.	Part Number	Description	Qty	Remarks
1	7VU-87150-10-00	STATOR ASSY .....	1	(7VU2)
2	7VU-87160-00-00	ROTOR ASSY .....	1	(7VU2)
3	7VU-87172-00-00	FAN, GENERATOR .....	1	(7VU2)
4	95807-06016-00	BOLT, FLANGE .....	3	(7VU2)
5	95827-06045-00	BOLT, FLANGE .....	4	(7VU2)
6	99530-08012-00	PIN, DOWEL .....	2	(7VU2)
7	7VU-8719F-01-00	TUBE 7 .....	2	(7VU2)
8	7VU-83595-00-00	CLAMP .....	1	(7VU2)
9	98507-05010-00	SCREW, PAN HEAD .....	2	(7VU2)
10	92907-05600-00	WASHER, PLATE .....	2	(7VU2)
11	7VU-87181-00-00	BRKT., GENERATOR MOUNT .	1	(7VU2)
12	98707-06016-00	SCREW, FLAT HEAD .....	4	(7VU2)
13	7VU-87139-00-00	LEAD WIRE ASSY 2 .....	1	(7VU2)
14	95880-06010-00	BOLT, FLANGE .....	1	(7VU2)
15	95780-06500-00	NUT, FLANGE .....	1	(7VU2)
16	7VU-87105-00-00	RECTIFIER ASSY 1 .....	1	(7VU2)
17	7VU-86515-00-00	PLATE, HEAT SINK .....	1	(7VU2)
18	98507-05020-00	SCREW, PAN HEAD .....	1	(7VU2)
19	95607-05200-00	NUT, U FLANGE .....	1	(7VU2)



7VU2110-0120



# CONTROL BOX



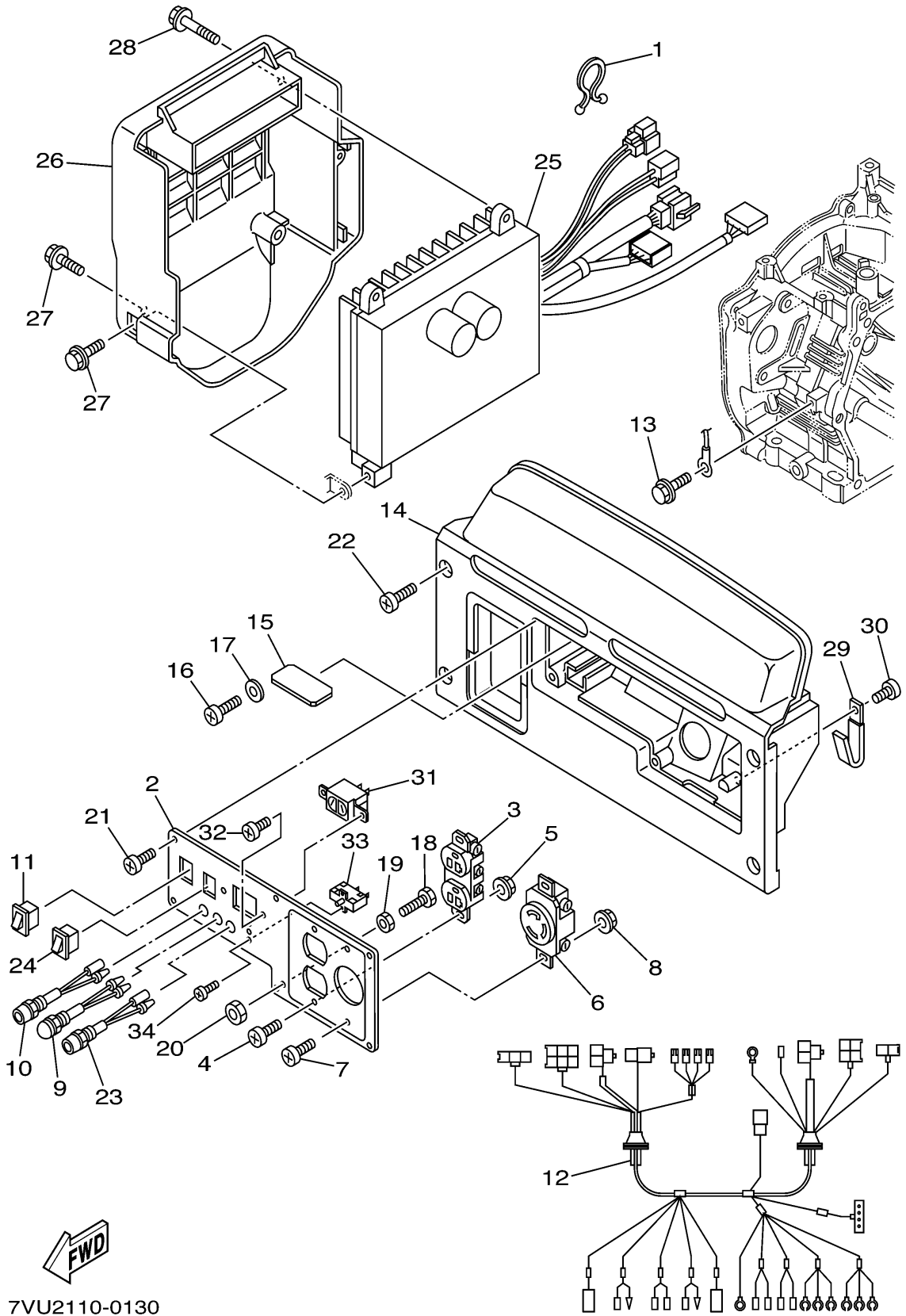
Ref. No.	Part Number	Description	Qty	Remarks
1	90464-16039-00	CLAMP	1	(7VU2)
2	7VU-87249-40-00	PLATE	1	(7VU2)
3	73H-87221-90-00	RECEPTACLE 1 (P&S 5-20R)	1	UR P&S(7VU2)
	7LL-87221-90-00	RECEPTACLE (WCF62120B02)	1	UR MATSUSITA(7VU2)
4	98507-04012-00	SCREW, PAN HEAD	2	(7VU2)
5	95707-04500-00	NUT, FLANGE	2	(7VU2)
6	73H-87222-91-00	RECEPTACLE 2	1	UR P&S(7VU2)
	7LR-87221-90-00	RECEPTACLE 1 (WCF63130B02)	1	UR MATSUSHITA(7VU2)
	7VU-87221-90-00	RECEPTACLE 1	1	UR MEIKOSHA(7VU2)
7	98507-04012-00	SCREW, PAN HEAD	2	(7VU2)
8	95707-04500-00	NUT, FLANGE	2	(7VU2)
9	7NJ-83530-00-00	PILOT LIGHT ASSY	1	(7VU2)
10	7NJ-85770-00-00	OIL PILOT LIGHT ASSY	1	(7VU2)
11	7NJ-82550-00-00	ENGINE STOP SWITCH ASSY	1	(7VU2)
12	7VU-87226-40-00	WIRE HARNESS ASSY	1	(7VU2)
13	95807-06010-00	BOLT, FLANGE	1	(7VU2)
14	7VU-87213-00-00	COVER, CONTROL BOX	1	(7VU2)
15	7VU-85690-00-00	OIL WARNING UNIT	1	(7VU2)
16	97707-30512-00	SCREW, TAPPING	1	(7VU2)
17	90201-03013-00	WASHER, PLATE	1	(7VU2)
18	97080-05016-00	BOLT	1	(7VU2)
19	95707-05500-00	NUT, FLANGE	1	(7VU2)
20	95380-05700-00	NUT	1	(7VU2)
21	97707-40516-00	SCREW, TAPPING	6	(7VU2)
22	98907-06014-00	SCREW, BIND	4	(7VU2)
23	7VU-83582-00-00	PILOT LIGHT ASSY	1	(7VU2)
24	7NJ-82550-00-00	ENGINE STOP SWITCH ASSY	1	(7VU2)

CONTINUED ON NEXT FRAME ►



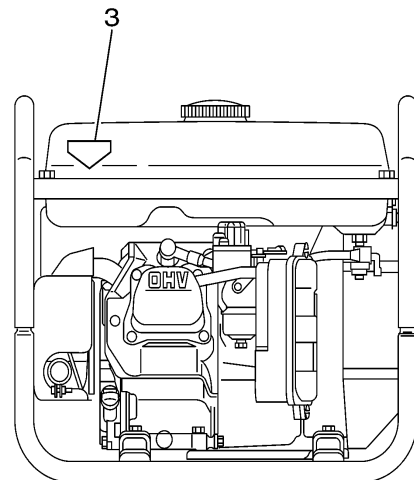
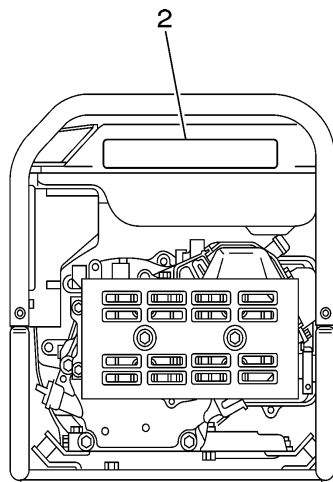
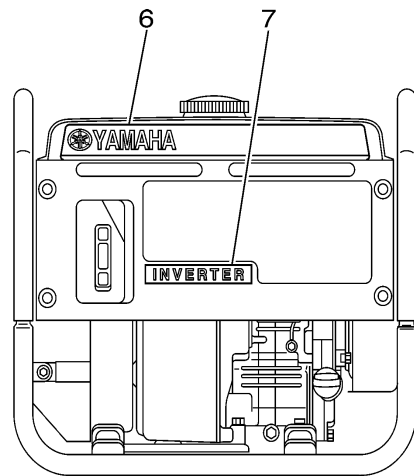
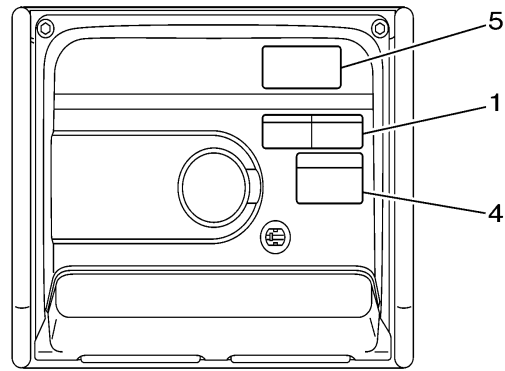
7VU2110-0130

# CONTROL BOX



Ref. No.	Part Number	Description	Qty	Remarks
25	7VU-8A210-80-00	CONTROL UNIT .....	1	(7VU2)
26	7VU-8721G-00-00	COVER, CONTROL BOX 2 ....	1	(7VU2)
27	95827-06012-00	BOLT, FLANGE .....	3	(7VU2)
28	95827-06025-00	BOLT, FLANGE .....	2	(7VU2)
29	90462-05061-00	CLAMP .....	1	(7VU2)
30	97707-60512-00	SCREW, TAPPING .....	1	(7VU2)
31	7LG-87239-00-00	RECEPTACLE COMP .....	1	(7VU2)
32	98507-04008-00	SCREW, PAN HEAD .....	2	(7VU2)
33	7VU-82181-00-00	CIRCUIT BREAKER COMP. ...	1	(7VU2)
34	98507-03008-00	SCREW, PAN HEAD .....	2	(7VU2)

 7VU2110-0130



7VU2100-0140

# LABELS

Ref. No.	Part Number	Description	Qty	Remarks
1	7TA-24162-10-00	EMBLEM 2 (WARNING) . . . . .	1	(7VU2)
2	7VU-2179R-00-00	PLATE, EPA 2 (CALIFORNIA) . . . . .	1	TO DEC.2000 PRODUCT.(7VU2)
	7VU-2179R-01-00	PLATE, EPA 2 (CALIFORNIA) . . . . .	1	FROM JAN.2001 PRODUCT.(7VU2)
3	7FL-2415A-10-00	LABEL, CAUTION (HOT EXHAUST) . . . . .	1	(7VU2)
4	73H-2415A-00-00	LABEL, CAUTION (WARNING) . . . . .	1	(7VU2)
5	7UH-2111F-00-00	LABEL, EMISSION . . . . .	1	(7VU2)
6	7VU-24161-10-00	EMBLEM 1 (YAMAHA) . . . . .	1	(7VU2)
7	7VU-24164-00-00	EMBLEM 4 (INVERTER) . . . . .	1	(7VU2)